



<http://www.alliedmarine.com>

Allied Marine - Tom Jenkins
110 N. Dixie Hwy.
Stuart, FL 34994, United States

Tel: 772.201.1800
Tel: 772-692-1122
tom.jenkins@alliedmarine.com



Profile

Hatteras 60 Motor Yacht– JULIA E

- Year: 1989
- Price: \$ 315,000
- Location: Osprey, FL, United States
- Hull Material: Fiberglass
- Fuel Type: Diesel
- YachtWorld ID: 3660311
- Condition: Used

1989 Hatteras 60 Motor Yacht "JULIA E"

One of only three 60' Hatteras uniquely featuring a Euro transom with a staircase to the swim platform, Julia E also features a large aft deck with new furniture, a wet bar, factory air conditioning, a large salon with a pilot house separation, a large galley with dinette, and three very comfortable staterooms. The very large flybridge with dual helm chairs and U-shaped seating also accommodates a dinghy and 3-way power davit. Additional highlights of the yacht include walk-around side decks, bow seating with sun pad, fiberglass pulpit, and a chain windlass. In excellent condition with constant updating, Julia E offers Hatteras quality at a fraction of the replacement cost, a superb value.

Dimensions

Cruising Speed: 12 kn	Max Speed: 18 kn	LOA: 60 ft
Beam: 18 ft 2 in	Min. Draft: 5 ft 1 in	Displacement: 86000 lb
Number of double berths: 2	Number of twin berths: 2	Number of Cabins: 3
Number of Heads: 3		

Engines

Engine #1

Engine Make: Detroit Diesel	Engine Model: DDA8V92TA	Primary Engines: Inboard
Location: Port	Power: 720 hp	

Engine #2

Engine Make: Detroit Diesel
Location: Starboard

Engine Model: DDA8V92TA
Power: 720 hp

Primary Engines: Inboard

Tankage

Fuel Tanks Capacity: 1033
gal

Fresh Water Tanks
Capacity: 335 gal

Holding Tank Capacity: 201
gal

Vessel Walkthrough

Accommodations

Julia E may be entered through port and starboard doors to the pilothouse that offers a helm with full electronics, teak flooring, and a staircase to the flybridge. The pilot house is open to the salon, separated by a console on which the helm and companion seats reside and in which the entertainment center is housed on the salon side.

Custom décor throughout the yacht has been designed by a noted decorator and is very pleasing and functional. The expansive salon is furnished with a large sofa on the port side and two occasional chairs to starboard. Aft of the salon is a large air-conditioned aft deck that offers access to the swim platform via a custom staircase added to this unique, sport deck edition. Outfitted for entertaining, the aft deck is appointed with stylish wicker furniture and a wet bar, ice maker and refrigerator on the forward bulkhead. Full walk-around side decks lead to seating and a sun pad on the forward deck.

Forward from the pilot house is the galley with teak sole and new dishwasher and full sized appliances. A dinette is adjacent. Further forward is a guest stateroom with private head and shower. Aft from the galley, the companion way with new washer/dryer, cedar lined locker, and storage leads to the second guest stateroom which provides twin lower berths and private head & shower. Further aft, the twin-engine rooms are accessed through port & starboard doors. The end of the companionway opens to the large, full beam master stateroom furnished with a tapered Queen berth, love seat, plenty of storage, and an ensuite head & jacuzzi tub and shower.

Above on the flybridge is a fully-functioning helm station and plenty of seating protected by a recently updated EZ2CY enclosure, as well as a Nautica dinghy and power rotating davit for ease of operation.

Electronics

NorthStar 6100 I

Auto-helm depth & speed

Simrad AP 50, auto pilot

Rudder angle indicator

Furuno radar

Glendinning synchronizers

KVH Tracvision with 2 receivers

Naiad stabilizer controls

Side power bow thruster

Fuel primers

VHF ICOM M602

Standard Horizon Hailer

Ray Marine wind machine

Tank level gauges

Clock & temp gauge

ACR spotlight, remote control

FLYBRIDGE

New Garmin 7612 Chart Plotter

Simrad AP 50, auto pilot

Rudder angle indicator

Ray Marine depth & speed

Ray Marine wind machine

ICOM M502 VHF

Naiad stabilizer controls

Standard Horizon hailer

12-volt outlet

110-volt outlet

Datamarine depth

ACR spotlight, remote control

Deck Equipment

Sport deck Euro Transom with lights and swim platform & ladder

Radar arch new blue LED lights & electronic mast

Bimini top and aft Bimini top

EZ2CY 3-side

Flybridge enclosure, 2013

Aft deck side sliding windows

Curved windows aft deck

Aft deck bar, new refrigerator, ice maker & storage

Aft deck air conditioning

Isinglass aft deck curtains with shade covers, new 2019

Walk around side decks and aft deck doors

Fiberglass U-shaped seating on FB with storage under

Flybridge table

Helm & Companion chairs FB custom

Dual lights, new LED for name on FB sides

Marquipt 1500 3-way power davit, serviced 2019

Chocks for dinghy

13' Nautic dinghy w/50 hp Yamaha 4 stroke, 498 Garmin GPS & depth, ICOM VHF

Flybridge stereo speakers, new 2019

Fore deck speaker new 2019

Fiberglass deck boxes 2

Fender holders bow

Retractable shore cords, port side & starboard

Fresh & raw water wash down

Forward bench seat & sun pad

Pulpit, Hatteras fiberglass

Windlass BBHW, new motor

Life raft

Spare props

Cleats & spring line cleats

Painted window frames

Fly Bridge

Full flybridge station with electronics and controls

U-shaped fiberglass seating & Table

Radar arch with fore and aft Bimini, new blue LED lights 2019

2 custom helm chairs

3-side EZ2CY flybridge enclosure

New Garmin 7612 chart plotter

Dinghy & 3-way power Marquipt davit

Life raft, 8-man

Mechanical

DDA 8V92TA's engine 720 hp. Serviced 2019

Airseps on main engines

New Northern Lights 20 kw generator 2011 477 hrs. Serviced 2019

New Northern Lights 12 kw generator 2011 824 hrs. Serviced 2019

Cruisair air conditioning, multiple units replaced, SMX controls

Salon & galley AC units, new 2019

All AC units checked and serviced 2019

New AC raw water pump, hoses and clamps 2019

Naiad stabilizers, dual station, removed & rebuilt 2019

New 4000-watt inverter / charger 2014

ESI fuel polishing system, 2 micron

Bow thruster, Side Power, separate batteries

Water heater, new 2014

Washer/dryer, new 2019

Racor fuel filters engines & generators

Voltage boosters (2)

Dripless shaft seals

Fresh water pump 24 volt with expansion tank,

New fresh water 220-volt pump, 2019

Marquipt davit services, 2019

Air compressor, electric port engine

High pressure raw water anchor wash system

Two heads, rebuilt 2019

Oil changing system

Sentry battery chargers plus inverter (2)

Seagull water filter system in galley

Cruisair air conditioning & bypass switches

Entertainment

TV master stateroom, new 2019

TV aft deck, new 2019

JVC AM/FM CD radios 3

TV - salon, new 2019

3 new smart TV's, 2019

Sony AM/FM stereo

Delphi XM radio

Electrical Equipment

Northern Lights generators, 2 new 20 & 12 KW

Magnum inverter / charger, 4000-watt 2014

Sentry battery chargers (2)

Battery parallel switches (3)

6 – 8 D 24-volt batteries, 2 for each engine and 2 for bow thruster

Transformer connected shorelines

Voltage boosters (2)

Fused electrical inlets

Two retractable shore cords

24- & 120-volt lights

120-volt duplex outlets

DC & AC distribution panels AC volt meters

Magnetic circuit breakers

Ground fault protection system

CATV inlets and outlets

Salon

New carpet, 2014

Teak wood interior

Large L-shaped sofa

Occasional chairs, 2

Cocktail table

Dresser, 3-drawer

Levelor blinds, large

Trac lighting

Indirect and direct lighting

Forward salon entertainment center

Open to pilot house

Door to aft deck

Aft Deck

Aft deck furniture and carpet, new 2019

Aft deck wet bar and storage

Ice maker, Scotsman

New refrigerator, 2019

Aft deck carpet

New aft deck enclosure, 2019

New aft deck custom curved windows 2019

Doors to side deck

Aft deck air conditioning

Gate to stairs case to Euro transom and swim platform with new LED lights

Pilothouse

Doors to side decks

Full helm station with electronics and controls

Combination divide helm seats, 2

Entertainment center

Ladder to fly bridge

Front windows with washers & wipers, rebuilt 2019

Teak parquet flooring

Overhead electronics console

Distribution panel for electrical systems

Entrance to galley on starboard side

Master Stateroom

Queen size tapered berth with under berth storage and new LED lighting

Custom bunk cover and shams

Ventilating port lights

Nightstands with painted white drawers

Cedar lined walk-in hanging locker with mirrored doors

Corner love seat

Reading lamps

Draperies

TV and stereo system

Safe in closet

24- & 120-volt lighting

En suite head & shower with jacuzzi tub and shower

Master Head

Electric toilet

Tub & shower with sliding door

Storage cabinet with mirror

Exhaust blower

Molded countertop with sink and faucet

24- & 120-volt lighting

120-volt outlet

Guest Stateroom 1

Twin lower side by side berths

Cedar lined hinging locker

Nightstand with drawers

Ventilating port lights

Custom bunk covers and accessories

24- & 120-volt lighting

Guest Stateroom 2

Upper & lower berths

Cedar lined hanging locker

Ventilating port lights

24- & 120-volt lighting

120-volt duplex outlets

Head

Electric toilet

Stall shower with bi-fold door

Storage cabinet with mirror

Exhaust blower

Molded counter top with sink and faucet

24- & 120-volt lighting

120-volt duplex outlet

Guest Head

Electric toilet

Stall shower with bi-fold door

Storage cabinet with mirror

Exhaust blower

Molded counter top with sink and faucet

24- & 120-volt lighting

120-volt duplex outlet

Galley

GE 4-burner range, Replaced

Whirlpool microwave oven, Replaced

Frigidaire Professional Series oven, Replaced

Kenmore refrigerator/freezer, Replaced

Dishwasher, new 2019

Corian counter tops with dinette to match

Teak parquet flooring, hinged to access generators & AC

Booth style dinette with storage under seats

24 & 120 lights

120-volt duplex outlet

Aft Companionway

Washer & dryer, new 2019

Cedar lined locker

Tenders

13' Nautica with new tubes and 50 hp Yamaha 4 stroke engine, steering replaced 2019

Yamaha service, 2019

New tender seat, 2019

Garmin GPS and depth sounder

Salesman's Comments

Julia E is one of three 60 Hatteras Sport Deck versions built and has to be the best 60' motor yacht on the market today. It offers a professionally-designed custom décor and is outfitted with the best equipment for cruising and anchoring. Review the extensive list of equipment and see why you should consider this classic, newly-updated, 3-stateroom Hatteras.

Disclaimer

The Company offers the details of this vessel in good faith but cannot guarantee or warrant the accuracy of this information nor warrant the condition of the vessel. A buyer should instruct his agents, or his surveyors, to investigate such details as the buyer desires validated. This vessel is offered subject to prior sale, price change, or withdrawal without notice.



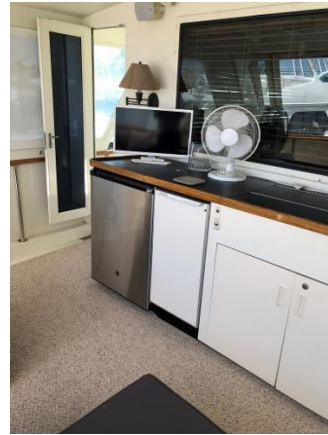
Profile



Bow View



Profile 2



Aft Deck



Salon



Salon Seating



Salon



Lower Helm



Galley



Dinette



Forward Stateroom



Guest Stateroom 2



Guest Stateroom 2



Master Stateroom



Master Stateroom



Master Head



Laundry



Engine Room



Engine Room



Engine Room